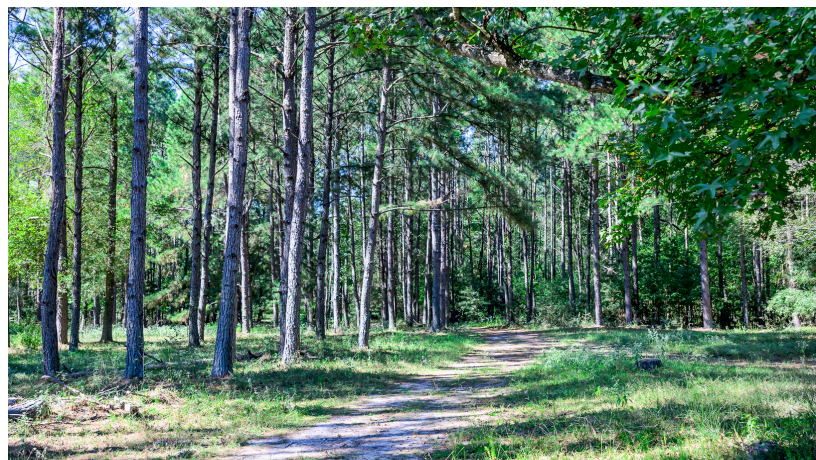
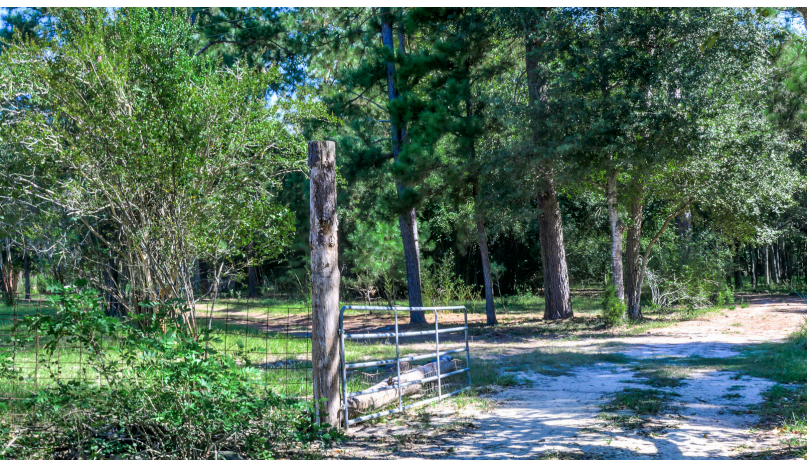




382 SAWMILL DRIVE
LOVELADY, TEXAS
1,873 SQ FT | 3 BEDROOMS | 2 BATHROOMS | 29.68 +/- ACRES



382 SAWMILL DRIVE



Great opportunity for quaint country living on 29.68 Acres in top rated Lovelady ISD! Peacefully secluded yet close to town, this property has a beautiful natural setting with a mix of pine timber and hardwoods. The 3 bedroom, 2 bath home features authentic wood floors, open concept living with kitchen/dining combination, screened in front porch and a deck overlooking your private pond. Updates include central HVAC, upgraded pex plumbing and new gas range. Additional buildings include older barn, detached garage and a separate bungalow with water & electricity. Lovelady is located between Crockett and Trinity, approximately 14 miles from each. Come check out this getaway!



Markham Realty
Selling Quality Texas Properties Since 1970
contact@markhamrealty.com
936-295-5989 | markhamrealty.com

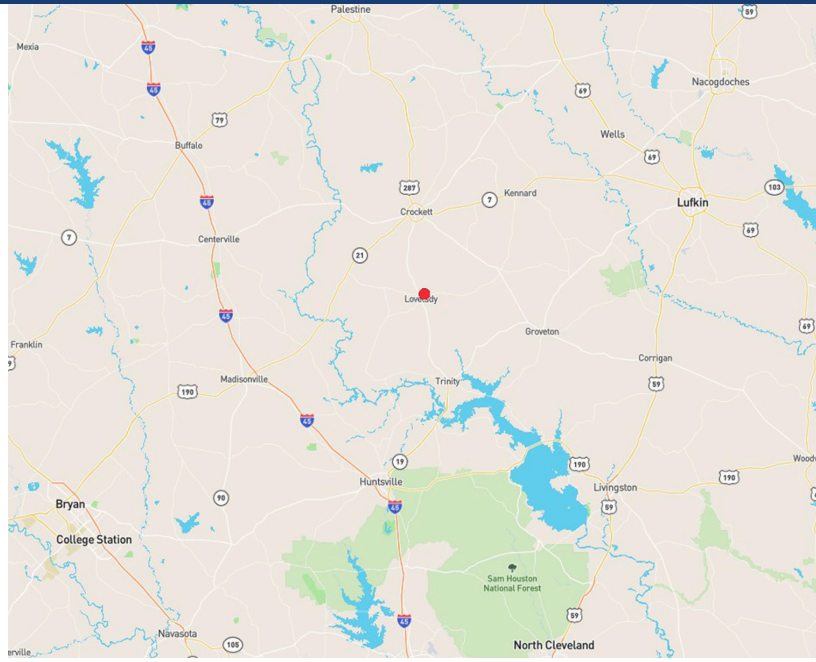
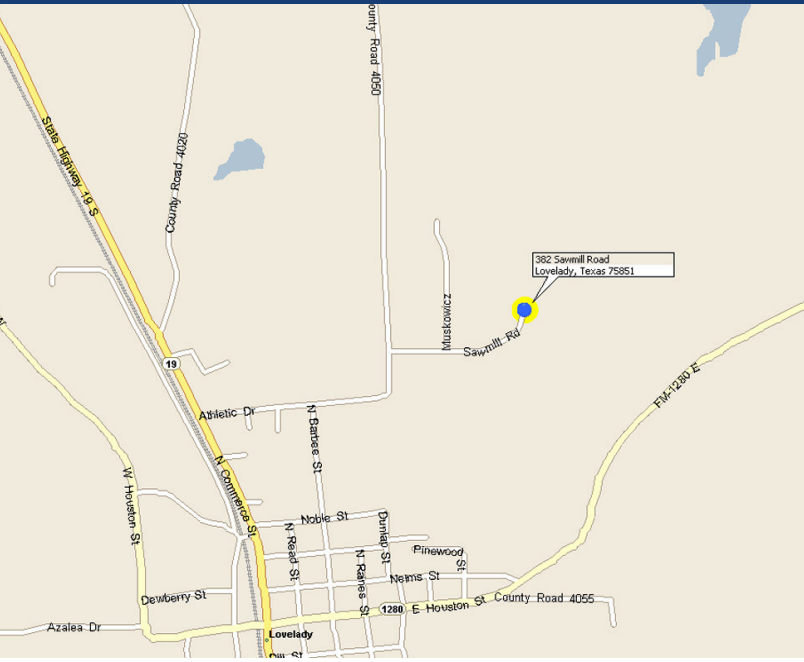


Scan here for additional information & photos.



Information furnished is from sources deemed reliable, but is not guaranteed by Markham Realty, Inc. The offerings are subject to change in price, errors, omissions, prior sales, or withdrawal without notice. Square footage, acreage size and lot dimensions are approximate. All persons and firms named in this brochure are licensed brokers or salespersons. Markham Realty, Inc. will co-broker with any licensed Broker if Broker and/or agent accompanies his or her prospective buyer from the first (1st) showing forward.

382 SAWMILL DRIVE



Directions: From Trinity, take Hwy 19 N to Lovelady. Turn right on Athletic Dr (street just before high school stadium), follow approx 1/2 mile to Sawmill Dr, turn right, follow to end of road.



Markham Realty
Selling Quality Texas Properties Since 1970
contact@markhamrealty.com
936-295-5989 | markhamrealty.com



Scan here for additional information & photos.



Information furnished is from sources deemed reliable, but is not guaranteed by Markham Realty, Inc. The offerings are subject to change in price, errors, omissions, prior sales, or withdrawal without notice. Square footage, acreage size and lot dimensions are approximate. All persons and firms named in this brochure are licensed brokers or salespersons. Markham Realty, Inc. will co-broker with any licensed Broker if Broker and/or agent accompanies his or her prospective buyer from the first (1st) showing forward.